

FOR LEASE

Ybor Professional Center

2109 Palm Avenue | Tampa, Florida 33605

YOUR NAME HERE
Visible From I-4

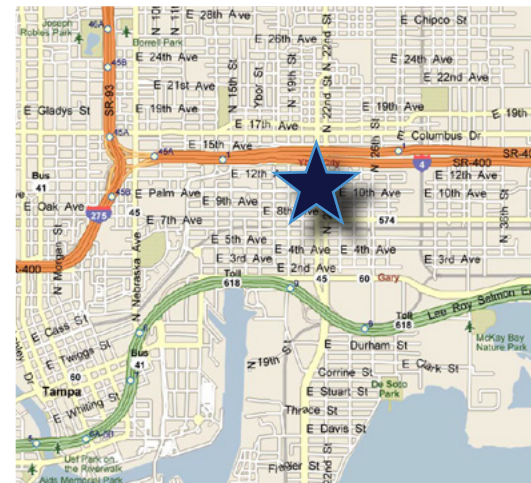
2109 Palm Avenue Tampa, Florida 33605

PROPERTY HIGHLIGHTS

- Class A Suites Available
- Superior Location with Immediate Access to I-4, I-275 and Downtown Tampa
- 4.0/1,000 Free Parking
- Recently Renovated

SUITES CURRENTLY AVAILABLE

- Suite 103: 2,537 SF \$12.00 Full Service - Net of Electricity
 - Suite 202: 1,464 SF \$18.00 Full Service - Net of Electricity*
 - Suite 203: 1,571 SF \$18.00 Full Service - Net of Electricity*
 - 3rd Floor: 6,660 SF \$18.50 Full Service - Net of Electricity
- *Contiguous to 3,035 SF



For more information, contact:

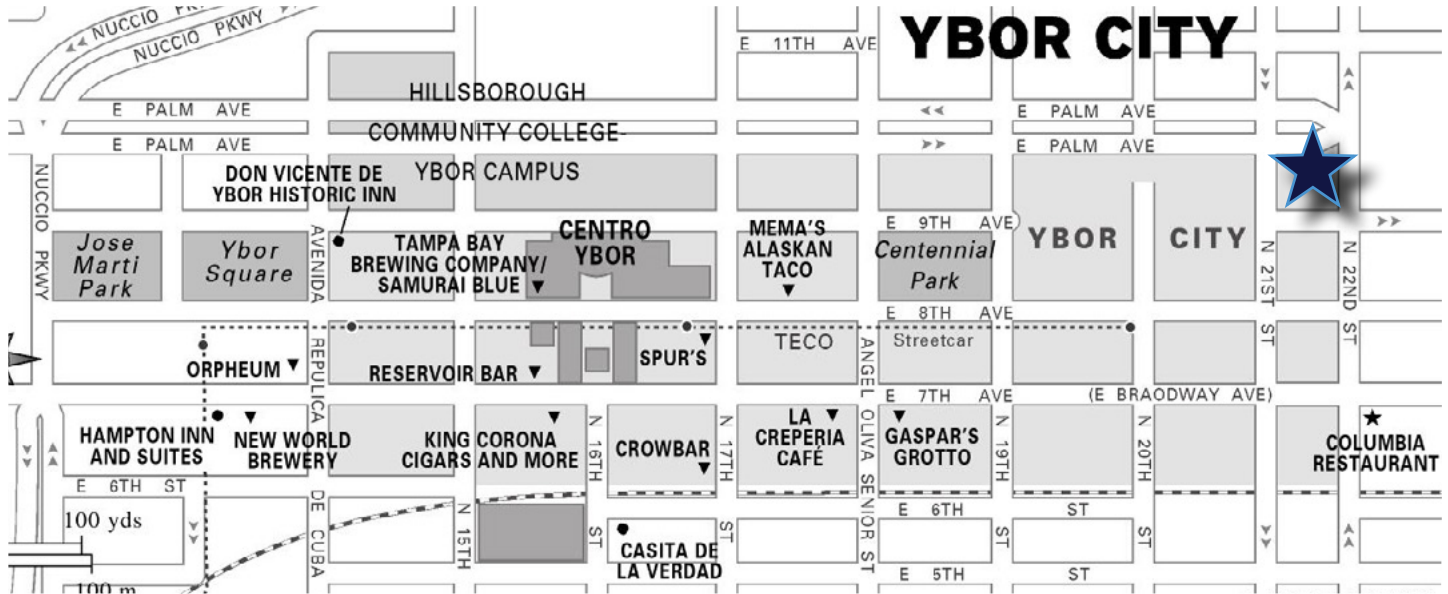
Jack A. Cohen
(Mobile) 813.495.0025 | (Office) 813.265.3460
Jack.Cohen@cohencregroup.com

FOR LEASE

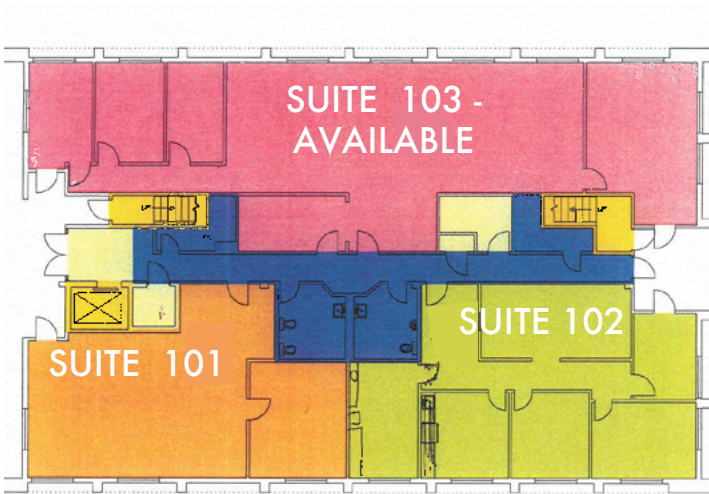
Ybor City Professional Center

2109 E. Palm Avenue | Tampa, FL 33605

LOCATION



1ST FLOOR PLAN



2ND FLOOR PLAN



For more information, contact:

Jack A. Cohen
(Mobile) 813.495.0025 | (Office) 813.265.3460
Jack.Cohen@cohencregroup.com